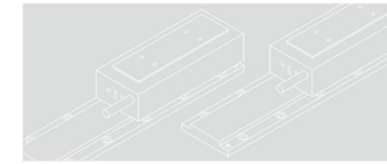


KFW2 Series

Iron-core Linear Motor



CONTENTS

With iron-core technology, Ultra-low cogging force, High acceleration, High speed

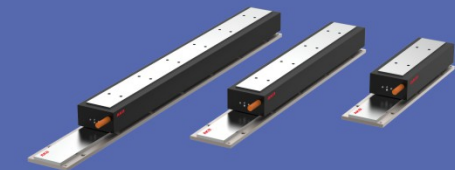
KFW2-30

Continuous Thrust: 90N~180N
Peak Thrust: 270N~540N
Mover Width: 030: 50mm
Mover Length: B: 125mm / D: 230mm
Width of stator: 030: 55mm
Length of stator: L180: 180mm / L270: 270mm



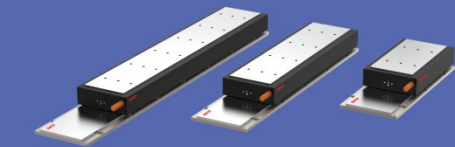
KFW2-45

Continuous Thrust: 280N~560N
Peak Thrust: 840N~1680N
Mover Width: 045: 69.5mm / 090: 114.5mm / 135: 160mm
Mover Length: B: 205mm / D: 384mm
Width of stator: 045: 75mm
Length of stator: L204: 204mm / L306: 306mm



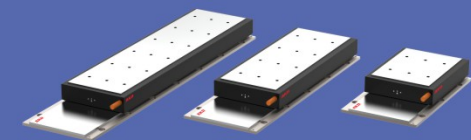
KFW2-90

Continuous Thrust: 560N~1680N
Peak Thrust: 1680N~5040N
Mover Width: 045: 69.5mm / 090: 114.5mm / 135: 160mm
Mover Length: B: 205mm / D: 384mm / F: 563mm
Width of stator: 090: 120mm
Length of stator: L204: 204mm / L306: 306mm



KFW2-1D

Continuous Thrust: 1680N~2520N
Peak Thrust: 5040N~7560N
Mover Width: 045: 69.5mm / 090: 114.5mm / 135: 160mm
Mover Length: D: 384mm / F: 563mm
Width of stator: 135: 175mm
Length of stator: L204: 204mm / L306: 306mm



KFW2-30

Iron-core Linear Motor

- Iron-core technology
- Ultra-low cogging
- High acceleration
- High speed



Rules of coil order number

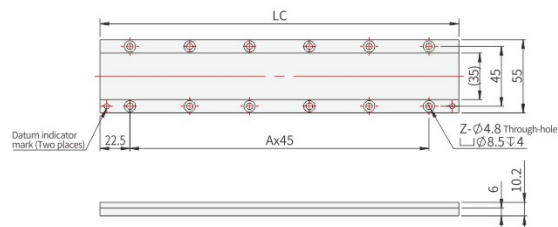
KFW2 - 30 A 120 A

Linear motor

Coil width		Supply voltage		Mover Length		Winding code	
Symbol	Specification	Symbol	Specification	Symbol	Specification	Standard winding "No mark"	
30	30mm	A	AC200V	120	125mm	A, B, C	
45	45mm			230	230mm		
90	90mm						
1D	135mm						

Note:
 *The default outgoing wire length is 0.5 meters. The model for the power cable extension is AL-DFN***.
 *For details about water-cooled models, please consult AKD.

Stator dimensions



Stator name: KFW030-L80, KFW030-L270

Stator model	LC	A	Magnetic pitch	Mass
Unit	mm	pcs	mm	kg/m
KFW030-L180	180	3	30	3.4
KFW030-L270	270	5	30	3.4



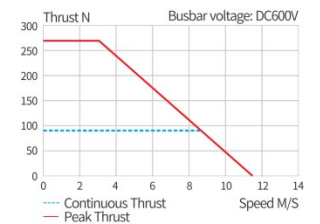
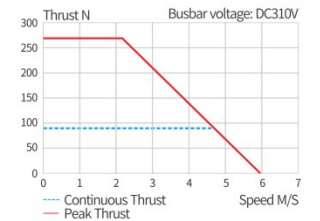
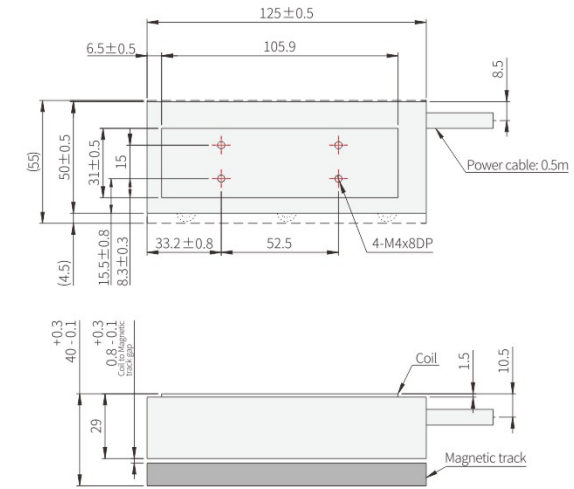
*Please consult our business personnel when special length is required.

KFW2-30

Iron-core Linear Motor

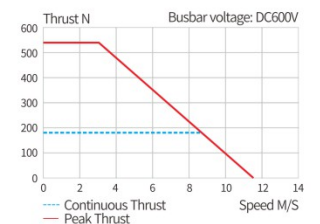
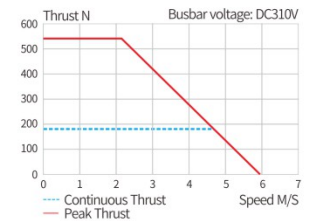
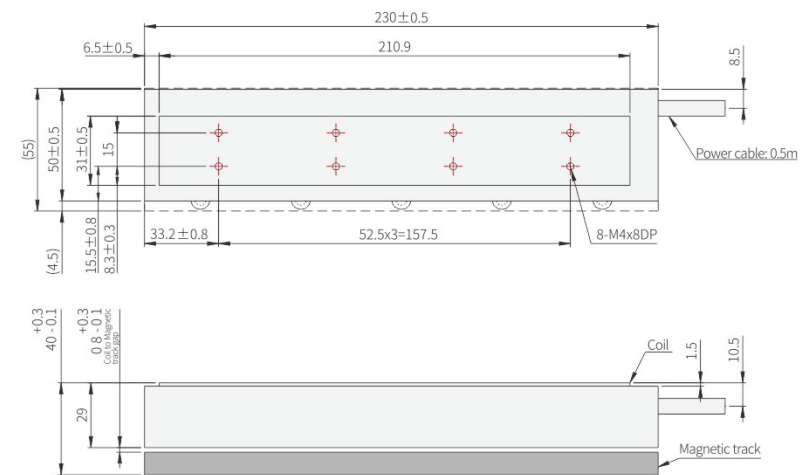
• KFW2-30A120 Dimensional parameters

Compatible Power Extension Cable (for AKD Models)
AL-DFN16-L*-T01



• KFW2-30A230 Dimensional parameters

Compatible Power Extension Cable (for AKD Models)
AL-DFN16-L*-T01



Performance Parameters	Continuous thrust	Peak thrust	Continuous current	Peak current	Thrust constant ±10%	Constant of reverse electromotive force ±10%	Motor constant ±10%	Resistance ±10%	Inductance ±30%	Electrical time constant	Rated power	Max. allowable voltage	Heat dissipation constant	Magnetic attraction	Coil weight	Max. temperature
Unit	N	N	A	A	N/A	V/m/s	N/√W	Ohm	mH	ms	W	Vdc	W/°C	KN	Kg	°C
KFW2-30A120	90	270	1.5	5.2	64.5	52	17	10.3	61.3	6	35	600	0.5	0.7	0.9	100
KFW2-30A230	180	540	2.9	10.4	64.5	52	24	5.2	32.6	6.3	65	600	0.9	1.3	1.7	100

*1.Measurement room temperature is 25°C, depending on the cooling environment.
 *3.Inductance measurement frequency 1kHz.

*2.DC current is used for resistance measurement, including 0.5m standard cable.
 *4.Relevant parameter specifications are subject to changes with out a prior notice.

KFW2-45

Iron-core Linear Motor

- Iron-core technology
- Ultra-low cogging
- High acceleration
- High speed



Rules of coil order number

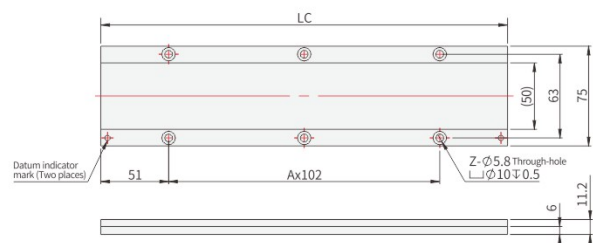
KFW2 - 45 A 200 A

Linear motor

Coil width		Supply voltage		Mover Length		Winding code
Symbol	Specification	Symbol	Specification	Symbol	Specification	Standard winding "No mark"
30	30mm	A	AC200V	200	205mm	A, B, C
45	45mm			560	563mm	
90	90mm					
1D	135mm					

Note:
 *The default outgoing wire length is 0.5 meters. The model for the power cable extension is AL-DFN***.
 *For details about water-cooled models, please consult AKD.

Stator dimensions



Stator name: KFW045-L204, KFW045-L306

Stator model	LC	A	Magnetic pitch	Mass
Unit	mm	pcs	mm	kg/m
KFW045-L204	204	1	51	4.9
KFW045-L306	306	2	51	4.9



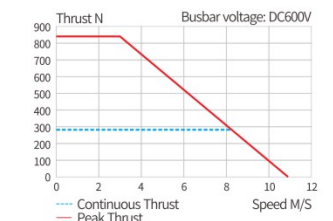
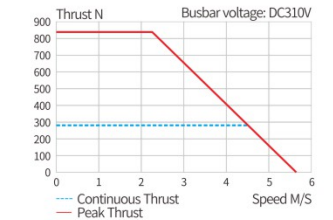
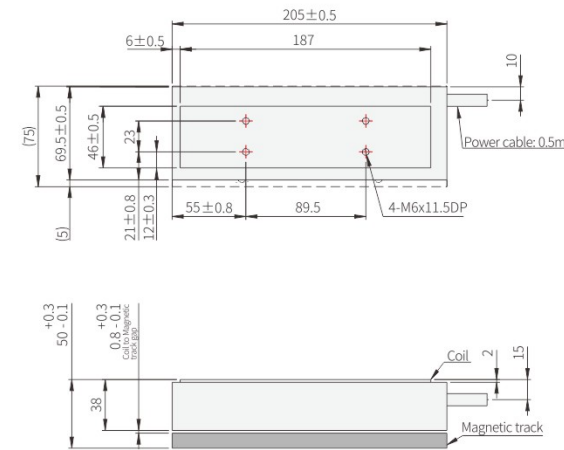
*Please consult our business personnel when special length is required.

KFW2-45

Iron-core Linear Motor

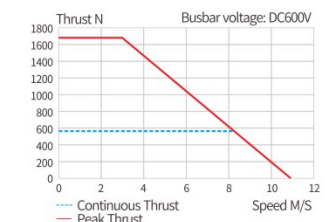
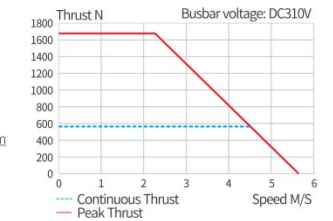
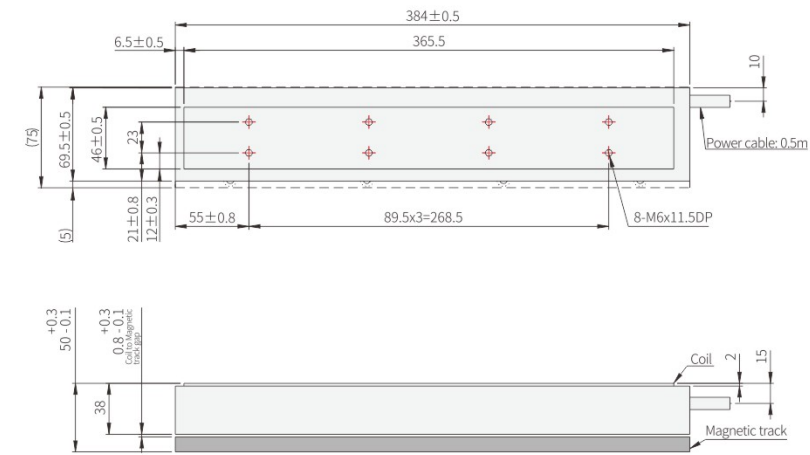
• KFW2-45A200 Dimensional parameters

Compatible Power Extension Cable (For AKD Models)
AL-DFN20-L*-T01



• KFW2-45A380 Dimensional parameters

Compatible Power Extension Cable (For AKD Models)
AL-DFN20-L*-T01



Performance Parameters	Continuous thrust	Peak thrust	Continous current	Peak current	Thrust constant ±10%	Constant of reverse electromotive force ±10%	Motor constant ±10%	Resistance ±10%	Inductance ±30%	Electrical time constant	Rated power	Max. allowable voltage	Heat dissipation constant	Magnetic attraction	Coil weight	Max. temperature
Unit	N	N	A	A	N/A	V/m/s	N/√W	Ohm	mH	ms	W	Vdc	W/°C	KN	Kg	°C
KFW2-45A200	280	840	4.4	16.4	67.5	55	37	2.9	36.2	12.5	84	600	1.1	2.1	2.9	100
KFW2-45A380	560	1680	8.8	32.8	67.5	55	52	1.5	17.1	11.8	168	600	2.2	4.3	5.6	100

*1.Measurement room temperature is 25°C, depending on the cooling environment.
 *3.Inductance measurement frequency 1kHz.

*2.DC current is used for resistance measurement, including 0.5m standard cable.
 *4.Relevant parameter specifications are subject to changes with out a prior notice.

KFW2-90

Iron-core Linear Motor

- Iron-core technology
- Ultra-low cogging
- High acceleration
- High speed



Rules of coil order number

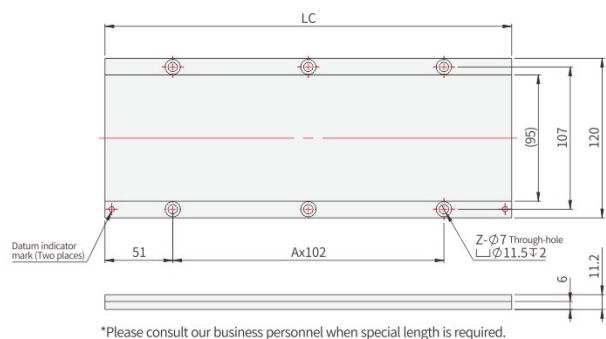
KFW2 - 90 A 200 A

Linear motor

Coil width		Supply voltage		Mover Length		Winding code
Symbol	Specification	Symbol	Specification	Symbol	Specification	Standard winding "No mark"
30	30mm	A	AC200V	200	205mm	A, B, C
45	45mm			380	384mm	
90	90mm			560	563mm	
1D	135mm					

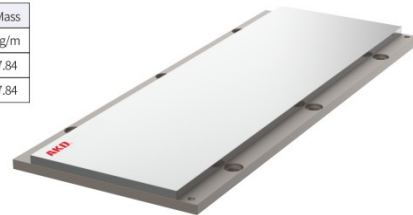
Note:
 *The default outgoing wire length is 0.5 meters. The model for the power cable extension is AL-DFN***.
 *For details about water-cooled models, please consult AKD.

Stator dimensions



Stator name: KFW090-L204, KFW090-L306

Stator model	LC	A	Magnetic pitch	Mass
Unit	mm	pcs	mm	kg/m
KFW090-L204	204	1	51	7.84
KFW090-L306	306	2	51	7.84



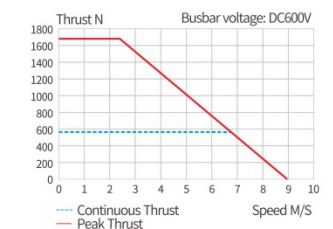
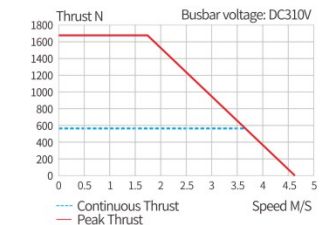
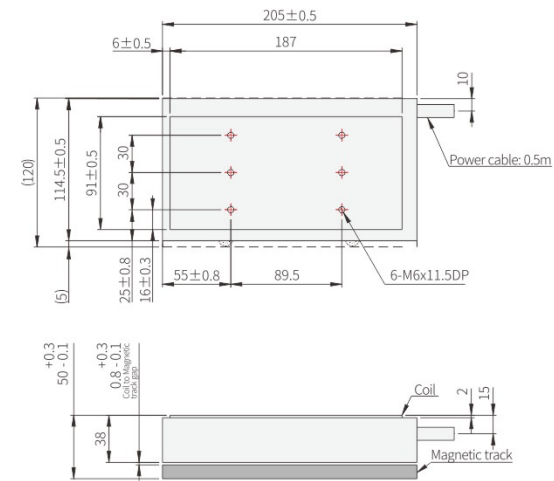
*Please consult our business personnel when special length is required.

KFW2-90

Iron-core Linear Motor

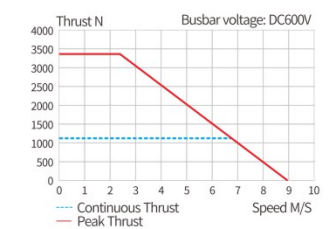
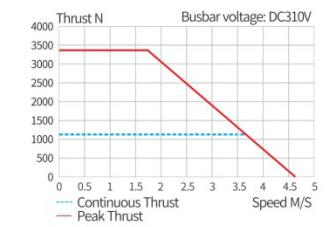
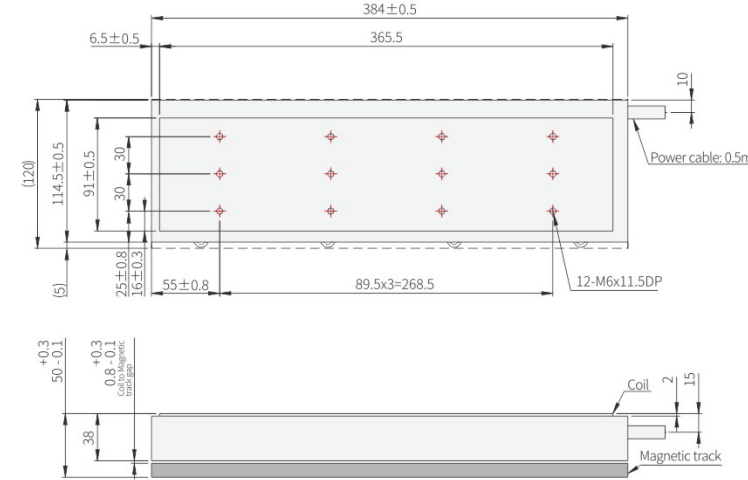
• KFW2-90A200 Dimensional parameters

Compatible Power Extension Cable (For AKD Models)
AL-DFN20-L*-T01



• KFW2-90A380 Dimensional parameters

Compatible Power Extension Cable (For AKD Models)
AL-DFN20-L*-T02



Performance Parameters	Continuous thrust	Peak thrust	Continous current	Peak current	Thrust constant ±10%	Constant of reverse electromotive force ±10%	Motor constant ±10%	Resistance ±10%	Inductance ±30%	Electrical time constant	Rated power	Max. allowable voltage	Heat dissipation constant	Magnetic attraction	Coil weight	Max. temperature
Unit	N	N	A	A	N/A	V/m/s	N/√W	Ohm	mH	ms	W	Vdc	W/°C	KN	Kg	°C
KFW2-90A200	560	1680	7.2	27.0	82	67	58	1.9	24.3	12.8	148	600	2.0	4.3	5.4	100
KFW2-90A380	1120	3360	14.4	54.0	82	67	82	1.0	12.2	12.8	296	600	3.9	8.5	10.1	100

*1.Measurement room temperature is 25°C, depending on the cooling environment.
 *3.Inductance measurement frequency 1kHz.

*2.DC current is used for resistance measurement, including 0.5m standard cable.
 *4.Relevant parameter specifications are subject to changes with out a prior notice.

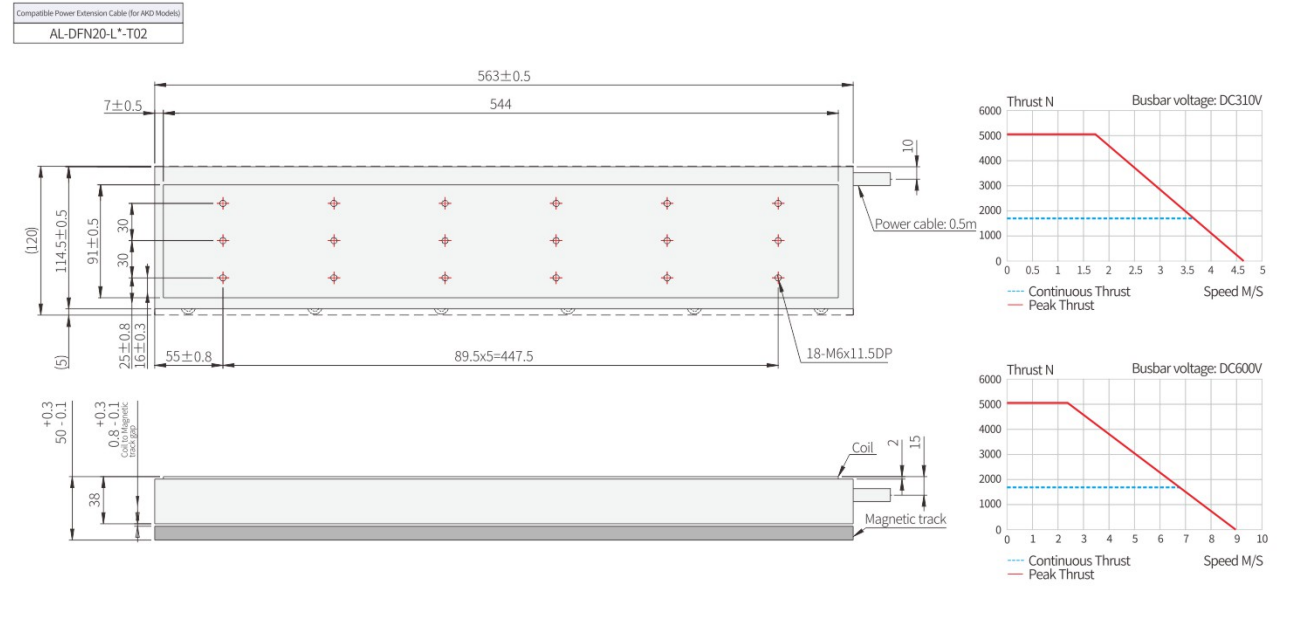
KFW2-90

Iron-core Linear Motor

KFW2-90

Iron-core Linear Motor

• KFW2-90A560 Dimensional parameters



Performance Parameters	Continuous thrust	Peak thrust	Continuous current	Peak current	Thrust constant ±10%	Constant of reverse electromotive force ±10%	Motor constant ±10%	Resistance ±10%	Inductance ±30%	Electrical time constant	Rated power	Max allowable voltage	Heat dissipation constant	Magnetic attraction	Coil weight	Max. temperature
Unit	N	N	A	A	N/A	V/m/s	N/√W	Ohm	mH	ms	W	Vdc	W/°C	KN	Kg	°C
KFW2-90A560	1680	5040	21.6	81.0	82	67	101	0.6	8.1	12.8	443	600	5.9	12.7	14.9	100

*1.Measurement room temperature is 25°C, depending on the cooling environment.
*3.Inductance measurement frequency 1kHz.

*2.DC current is used for resistance measurement, including 0.5m standard cable.
*4.Relevant parameter specifications are subject to changes with out a prior notice.

MEMO

KFW2-1D

Iron-core Linear Motor

- Iron-core technology
- Ultra-low cogging
- High acceleration
- High speed



Rules of coil order number

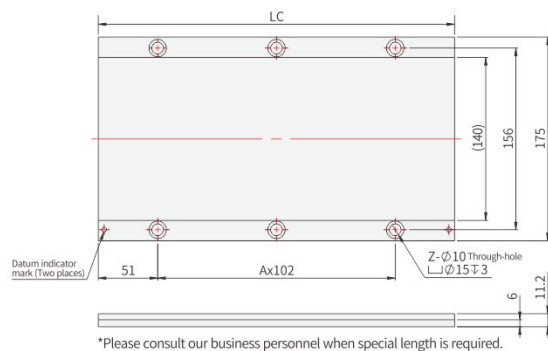
KFW2 - 1D A 380 A

Linear motor

Coil width		Supply voltage		Mover Length		Winding code
Symbol	Specification	Symbol	Specification	Symbol	Specification	Standard winding "No mark"
30	30mm	A	AC200V	380	384mm	A, B, C
45	45mm			560	563mm	
90	90mm					
1D	135mm					

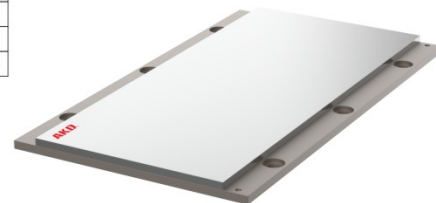
Note:
 *The default outgoing wire length is 0.5 meters. The model for the power cable extension is AL-DFN***.
 *For details about water-cooled models, please consult AKD.

Stator dimensions



Stator name: KFW1D-L204, KFW1D-L306

Stator model	LC	A	Magnetic pitch	Mass
Unit	mm	pcs	mm	kg/m
KFW1D-L204	204	1	51	11.43
KFW1D-L306	306	2	51	11.43

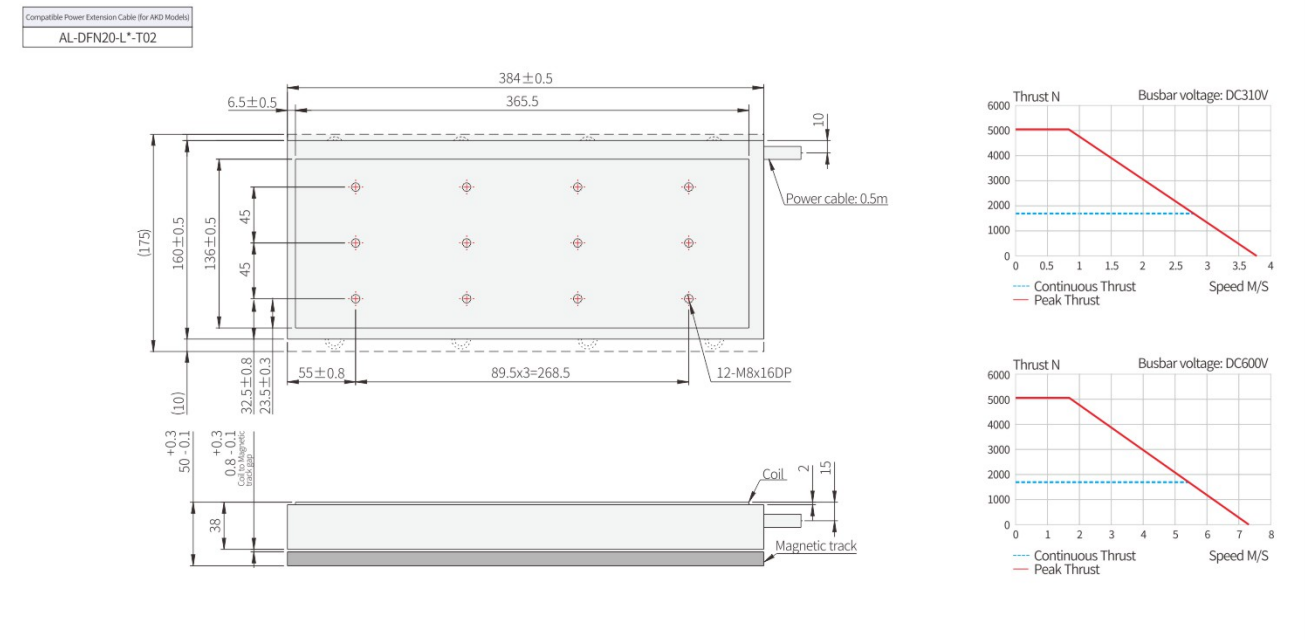


*Please consult our business personnel when special length is required.

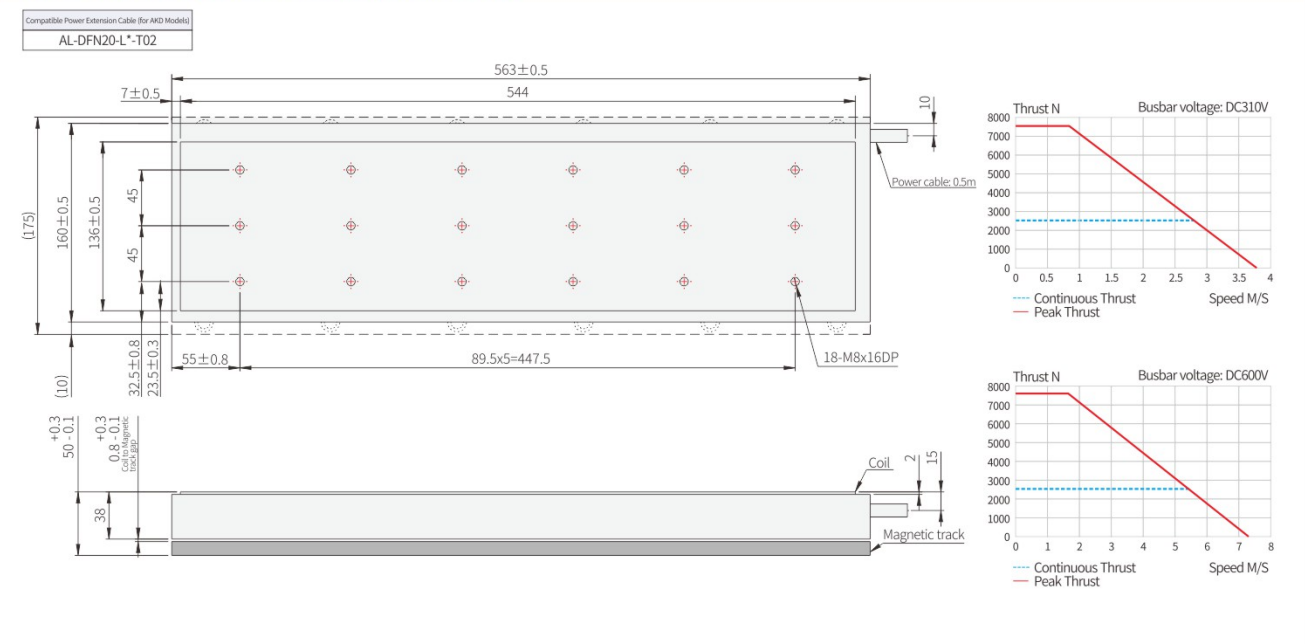
KFW2-1D

Iron-core Linear Motor

• KFW2-1DA380 Dimensional parameters



• KFW2-1DA560 Dimensional parameters



Performance Parameters	Continuous thrust	Peak thrust	Continous current	Peak current	Thrust constant ±10%	Constant of reverse electromotive force ±10%	Motor constant ±10%	Resistance ±10%	Inductance ±30%	Electrical time constant	Rated power	Max. allowable voltage	Heat dissipation constant	Magnetic attraction	Coil weight	Max. temperature
Unit	N	N	A	A	N/A	V/m/s	N/√W	Ohm	mH	ms	W	Vdc	W/°C	KN	Kg	°C
KFW2-1DA380	1680	5040	14.4	54.0	123	82	105	1.4	17.3	12.4	436	600	5.8	12.7	14.6	100
KFW2-1DA560	2520	7560	21.6	81.0	123	82	129	0.9	11.5	12.4	653	600	8.7	19	21.6	100

*1.Measurement room temperature is 25°C, depending on the cooling environment.
 *3.Inductance measurement frequency 1kHz.

*2.DC current is used for resistance measurement, including 0.5m standard cable.
 *4.Relevant parameter specifications are subject to changes with out a prior notice.